

**Chapter 14 The Human Genome****Section Review 14-1****Reviewing Key Concepts**

**Short Answer** *On the lines provided, answer the following questions.*

1. What combination of sex chromosomes produces a human female?

\_\_\_\_\_

2. What combination of sex chromosomes produces a human male?

\_\_\_\_\_

3. Which kind of cell determines the sex of a child?

\_\_\_\_\_

4. What fact explains why approximately half of the children born are male and half are female?

\_\_\_\_\_

\_\_\_\_\_

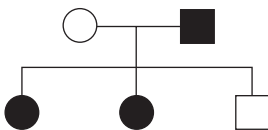
5. In cystic fibrosis, how does a small change in the DNA of a single gene affect a protein?

\_\_\_\_\_

\_\_\_\_\_

**Reviewing Key Skills**

**Interpreting Graphics** *Use the pedigree chart below to answer the following questions:*



6. Which member(s) of the family show the trait?

\_\_\_\_\_

7. Which member(s) of the family carry the allele for the trait?

\_\_\_\_\_

8. Which member(s) of the family do not carry the allele for the trait?

\_\_\_\_\_

9. **Applying Concepts** Explain why the two alleles,  $I^A$  and  $I^B$ , that produce the AB blood type are said to be codominant.

\_\_\_\_\_

\_\_\_\_\_

\_\_\_\_\_